

ADDISON RESERVE PLAT ONE

PART OF THE GLENEAGLES/POLO CLUB WEST P. U. D.
 SITUATE IN SECTIONS 27 AND 28, TOWNSHIP 46 SOUTH, RANGE 42 EAST
 PALM BEACH COUNTY, FLORIDA
 FEBRUARY, 1995 SHEET 4 OF 6

230-013

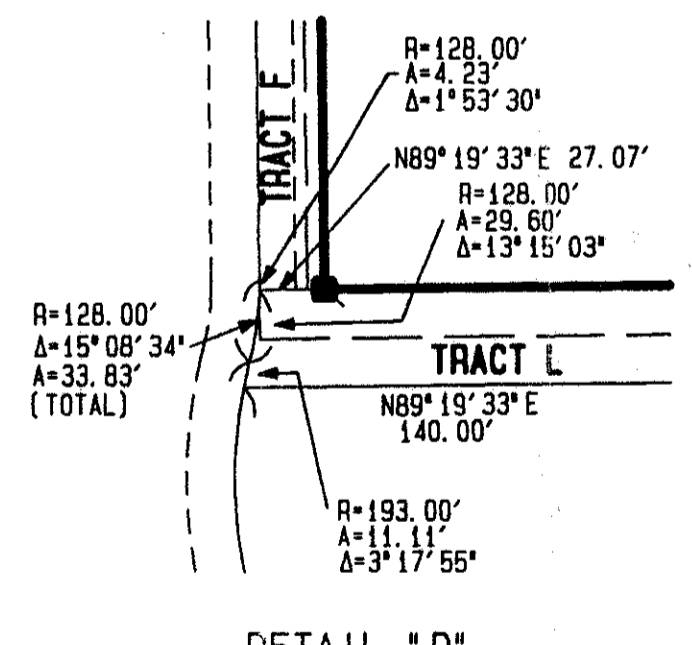
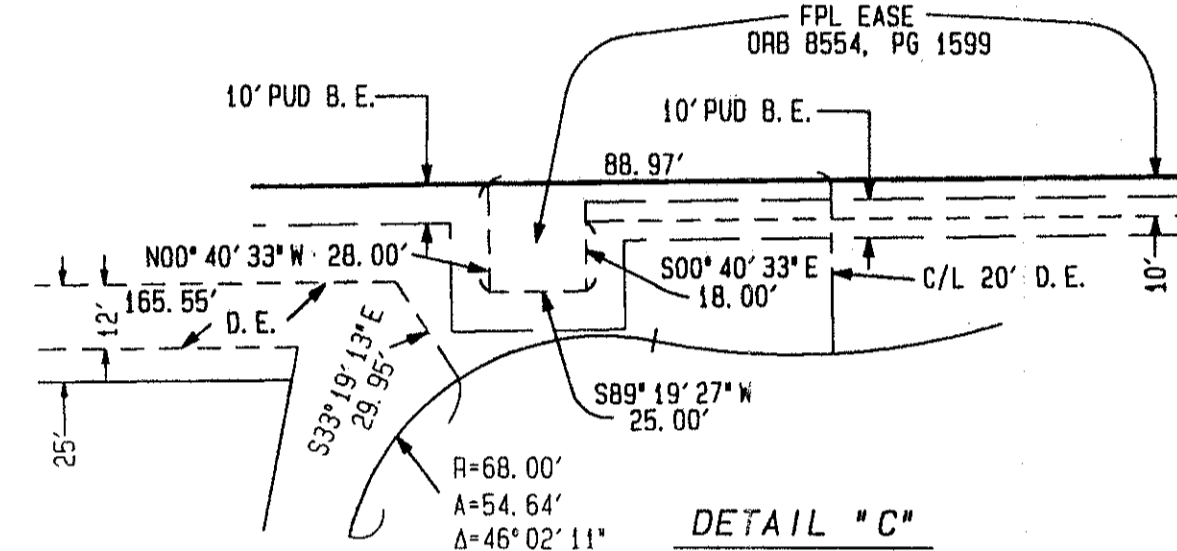
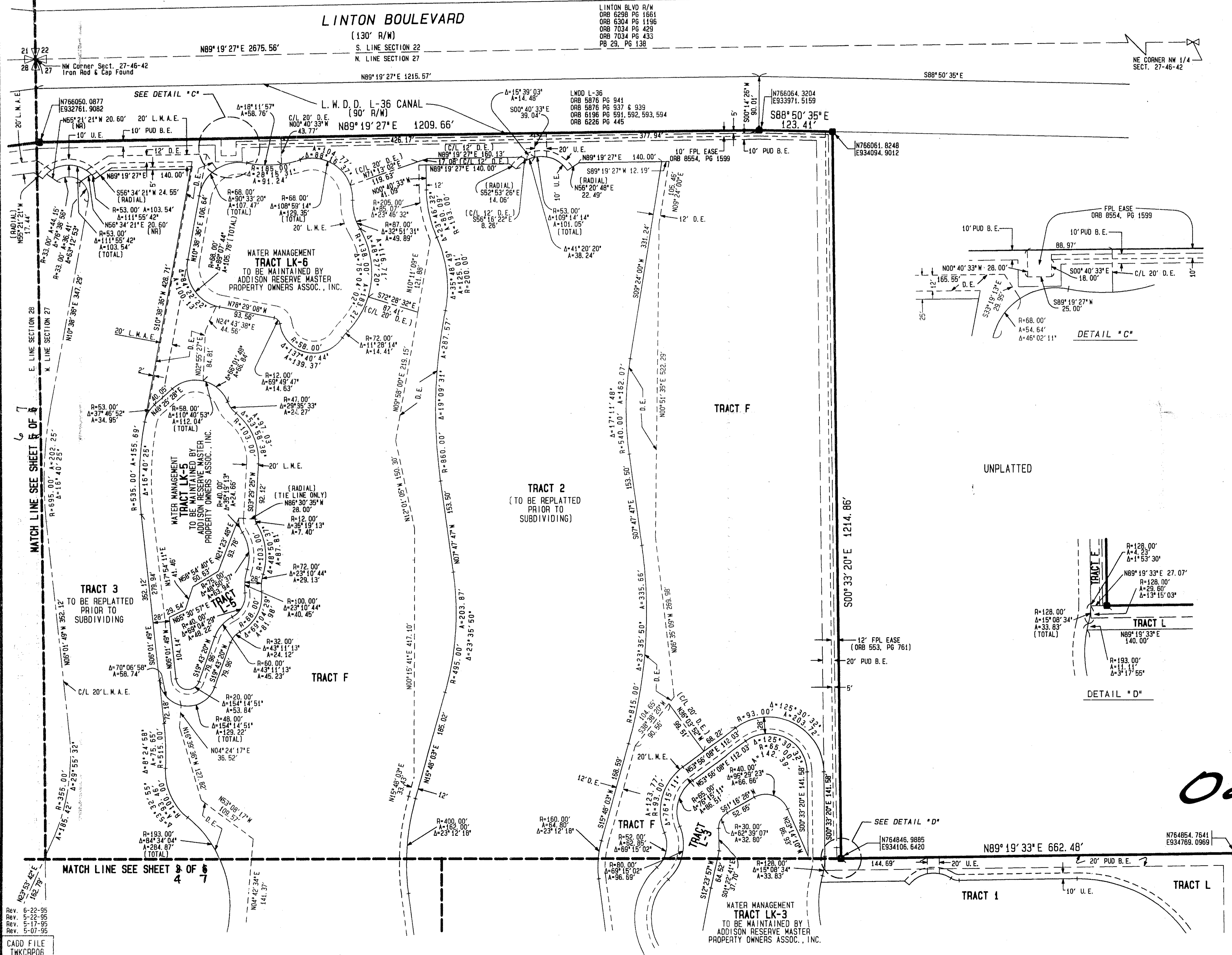
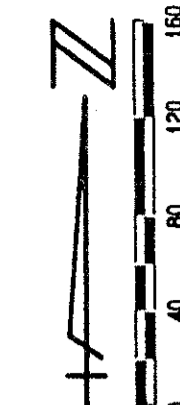
147

STATE OF FLORIDA
 COUNTY OF PALM BEACH

THIS PLAT WAS FILED FOR
 RECORD _____ DAY OF _____
 AD. 1995 AND DULY RECORDED
 IN PLAT BOOK _____ ON PAGES _____
 AND _____

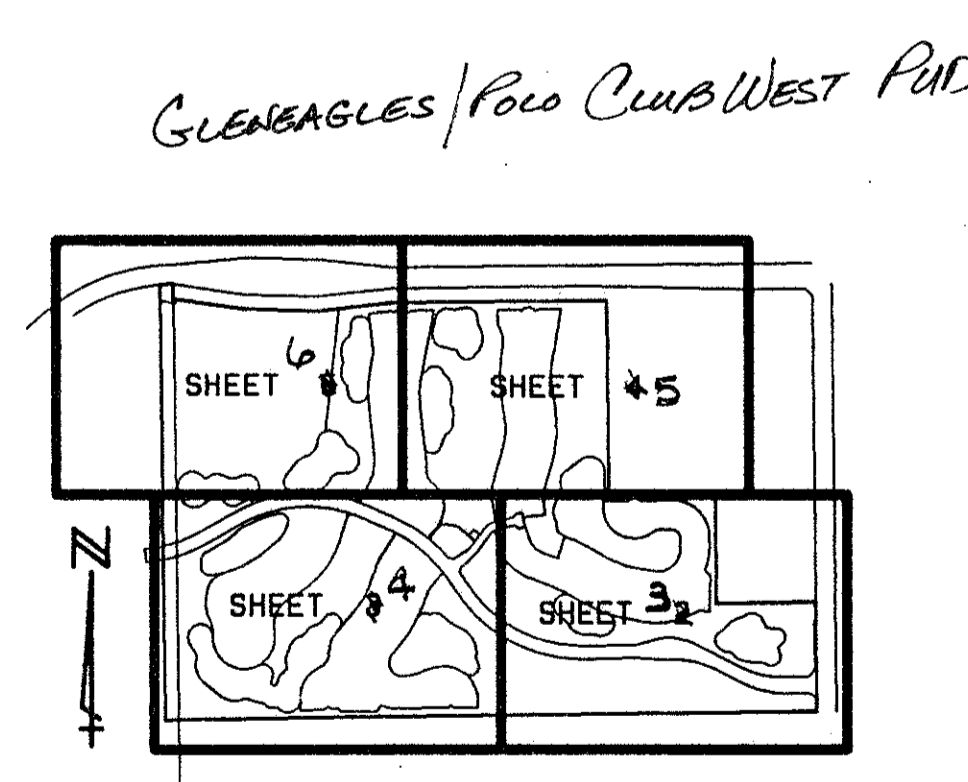
DOROTHY H. WILKEN, CLERK
 BY: _____, D.C.

CIRCUIT COURT SEAL



- LEGEND:**
- L.W.D. LAKE WORTH DRAINAGE DISTRICT
 - FPL FLORIDA POWER & LIGHT
 - ORB OFFICIAL RECORD BOOK
 - PCBO PALM BEACH COUNTY
 - PRM PERMANENT REFERENCE MONUMENT
 - P.B. PLAT BOOK
 - P.P. PAGES
 - PG. PAGE
 - U.E. UTILITY EASEMENT
 - D.E. DRAINAGE EASEMENT
 - A.E. ACCESS EASEMENT AND MAINTENANCE EASEMENT
 - TWP TOWNSHIP
 - RNG. RANGE
 - (NR) NON RADIAL
 - C/L CENTERLINE
 - PERMANENT CONTROL POINT
 - PERMANENT REFERENCE MONUMENT
 - SET PLS# 4763
 - PERMANENT REFERENCE MONUMENT FOUND
 - L.M.A.E. LAKE MAINTENANCE ACCESS EASEMENT
 - L.M.E. LAKE MAINTENANCE EASEMENT
 - R/W RIGHT OF WAY
 - EASE EASEMENT
 - PUD PLANNED UNIT DEVELOPMENT
 - B.E. BUFFER EASEMENT
 - L.A.E. LIMITED ACCESS EASEMENT

ALL DISTANCES ARE GROUND
 SCALE FACTOR = 1.0000242



SHEET LOCATION MAP
 NOT TO SCALE

0230-013

THIS INSTRUMENT WAS PREPARED BY MARY HANNA CLODFELTER, P.L.S. IN THE OFFICES OF MOCK, ROOS & ASSOCIATES, INC., 5720 CORPORATE WAY, WEST PALM BEACH, FLORIDA 33407.

MATCH LINE SEE SHEET 3 OF 6
 75/147 SHEET 4 OF 6

MOCK, ROOS & ASSOCIATES, INC.
 5720 CORPORATE WAY, WEST PALM BEACH, FL 33407 (407) 693-3113

SCALE: 1"=80'
 DATE: FEBRUARY 1995

P.A. NO. 94182.00
 DWG. NO. 46-42-27-33

ADDISON RESERVE PLAT ONE
 PART OF "GLENEAGLES/POLO CLUB WEST, P. U. D."
 SECTIONS 27 & 28, TOWNSHIP 46 SOUTH,
 RANGE 42 EAST

SUBDIVISION * Addison Reserve Plat One
 BOOK 75 PAGE 147
 FLOOD ZONE B FLOOD MAP * Z15A
 QUAD * 52.37 ZONING R1S
 SE 80-215 ZIP CODE 33446
 PUD NAME Gleneagles
 Reference 27-28/46-42

TAZ-477

CADD FILE
 THKCRP06

REV. 5-07-95
 REV. 5-25-95
 REV. 6-22-95